

DC/DC CONVERTERS PT15 SERIES

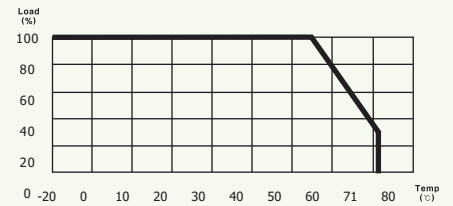
ORDERING INFORMATION

Input	Output1	Output2	Output3	Maximum Power	Ripple&Noise max	Efficiency Typ.	Model Number
10 - 36V	3.3V@4.00A			13.2W	75mVp-p	80%	PTS15-24-3R3
10 - 36V	5V@3.00A			15.0W	75mVp-p	85%	PTS15-24-5
10 - 36V	12V@1.25A			15.0W	120mVp-p	86%	PTS15-24-12
10 - 36V	15V@1.00A			15.0W	150mVp-p	84%	PTS15-24-15
10 - 36V	5V@1.50A	-5V@1.50A		15.0W	50/50mVp-p	85%	PTD15-24-55
10 - 36V	12V@0.625A	-12V@0.625A		15.0W	120/120mVp-p	87%	PTD15-24-1212
10 - 36V	15V@0.50A	-15V@0.50A		15.0W	150/150mVp-p	87%	PTD15-24-1515
10 - 36V	3.3V@2.0A	12V@0.31A	-12V@0.31A	12.39W	50/120/120mVp-p	83%	PT15-24-322
10 - 36V	5V@1.50A	12V@0.31A	-12V@0.31A	15.0W	50/120/120mVp-p	84%	PT15-24-522
10 - 36V	3.3V@2.0A	15V@0.25A	-15V@0.25A	12.45W	50/150/150mVp-p	83%	PT15-24-3FF
10 - 36V	5V@1.50A	15V@0.25A	-15V@0.25A	15.0W	50/150/150mVp-p	84%	PT15-24-5FF
<hr/>							
20 - 72V	3.3V@4.00A			13.2W	75mVp-p	80%	PTS15-48-3R3
20 - 72V	5V@3.00A			15.0W	75mVp-p	85%	PTS15-48-5
20 - 72V	12V@1.25A			15.0W	120mVp-p	87%	PTS15-48-12
20 - 72V	15V@1.00A			15.0W	150mVp-p	87%	PTS15-48-15
20 - 72V	5V@1.50A	-5V@1.50A		15.0W	50/50mVp-p	85%	PTD15-48-55
20 - 72V	12V@0.625A	-12V@0.625A		15.0W	120/120mVp-p	86%	PTD15-48-1212
20 - 72V	15V@0.50A	-15V@0.50A		15.0W	150/150mVp-p	87%	PTD15-48-1515
20 - 72V	3.3V@2.0A	12V@0.31A	-12V@0.31A	12.39W	50/120/120mVp-p	83%	PT15-48-322
20 - 72V	5V@1.50A	12V@0.31A	-12V@0.31A	15.0W	50/120/120mVp-p	84%	PT15-48-522
20 - 72V	3.3V@2.0A	15V@0.25A	-15V@0.25A	12.45W	50/150/150mVp-p	83%	PT15-48-3FF
20 - 72V	5V@1.50A	15V@0.25A	-15V@0.25A	15.0W	50/150/150mVp-p	84%	PT15-48-5FF

Pin assignments

Single Output	Dual Output	Triple Output
1. +Vin	1. +Vin	1. +Vin
2. -Vin	2. -Vin	2. -Vin
3. No pin	3. No pin	3. No pin
4. Control(enable)	4. Control(enable)	4. Control(enable)
<hr/>		
5. No connect	5. Output1	5. Output2
6. +Vout	6. COM	6. Output1
7. -Vout	7. Output2	7. GND
8. Trim	8. Trim	8. Output3

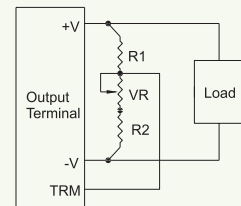
Derating curve



External parts

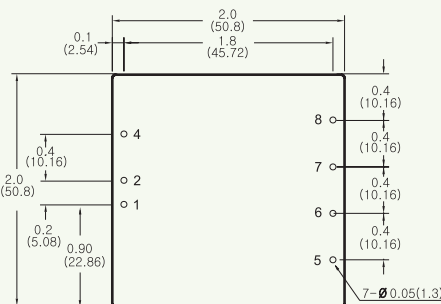
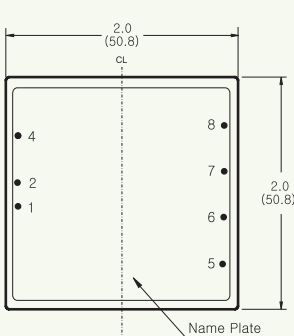
Model	Output Voltage	VR	R1	R2
PTS 15	5V	1K	1K	680 Ohm
	12V	1K	3.9K	680 Ohm
	15V	1K	5.6K	750 Ohm
<hr/>				
PTD 15	±5V (10V)	1K	3.3K	680 Ohm
	±12V (24V)	5K	9.0K	820 Ohm
	±15V (30V)	5K	20.0K	910 Ohm

Trim method

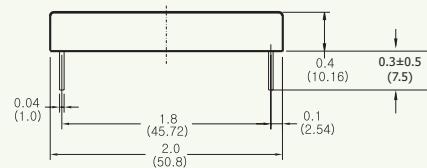


DIMENSIONS

PT



* Mounting hole top view



NOTES

- All dimensions are in inches and (mm).
- Weight : 75g or less